

JUDY JACOBS PARKWAY ELEMENTARY SCHOOL

Progressive Developmental Guidance Program

Gregory Scesney, Principal

Joanna Gentile, Assistant Principal

Stephanie Mann, School Psychologist

Marc Galloway, Social Worker

Stephanie Graziosi, Guidance Counselor



Mission Statement

- The mission of the Plainview-Old Bethpage Central School District is to provide an academically challenging and stimulating environment for all students, and to enable them to realize the full potential to be happy, ethical and analytical citizens of the world.

We do this by:

- making tolerance, acceptance, respect, honesty and kindness expectations for all students, and for members of the Plainview-Old Bethpage school community;
- identifying each student's academic, social-emotional, aesthetic and physical needs, and striving to meet those needs; and
- encouraging communication between and among students, teachers, parents, administrators and community members.

School-wide Initiatives

- **Weekly Spirit Days**
- **PTA Cultural Arts program**
- **PARP**
- **Digital Citizenship Week**
- **Bully Frog Programs**
- **Kids on the Block**
- **Building wide Monthly Social-Emotional Themes**

Individual Counseling

- **Crisis Intervention**
- **Conflict Resolution**
- **Academic Counseling**
- **Decision Making Skills**
- **Study & Organizational Skills**
- **Transition Planning**
- **Mandated Counseling**
- **Non-Mandated Counseling**
- **Coping Skills**
- **Social Skills**
- **Anger Management**
- **Mediation**
- **Stress Management**
- **Bereavement**
- **Changing Family (divorce/separated)**



Please note that guidance counseling groups are subject to change based on the specific needs of students.

Group Counseling

- **Social Skills**
- **Friendship**
- **Changing Family**
- **Relational Aggression**
- **Self-Esteem**
- **Anger Management**
- **SOS**

Social and Emotional Learning (SEL)/Classroom Lessons

- Transition Groups
- Internet Safety / Cyberbullying
- Tolerance and Acceptance
- Social Skills Groups
- Bully Frog Program

Please note that classroom lessons can be individual or small/large group programs. They are tailored to the developmental needs of the grade level .

Articulation and Advocacy

- **CSE-Committee of Special Education Meetings**
- **504 Meetings**
- **408 Meetings**
- **Team Meetings**
- **Parent/Team Meetings**
- **Articulation/Transition Meetings**
- **Grade Level Meetings**
- **Support Staff Meetings**
- **Department Meeting**
- **RtI (Response to Intervention)**
- **DASA Committee Meetings**
- **Site Based Meetings**

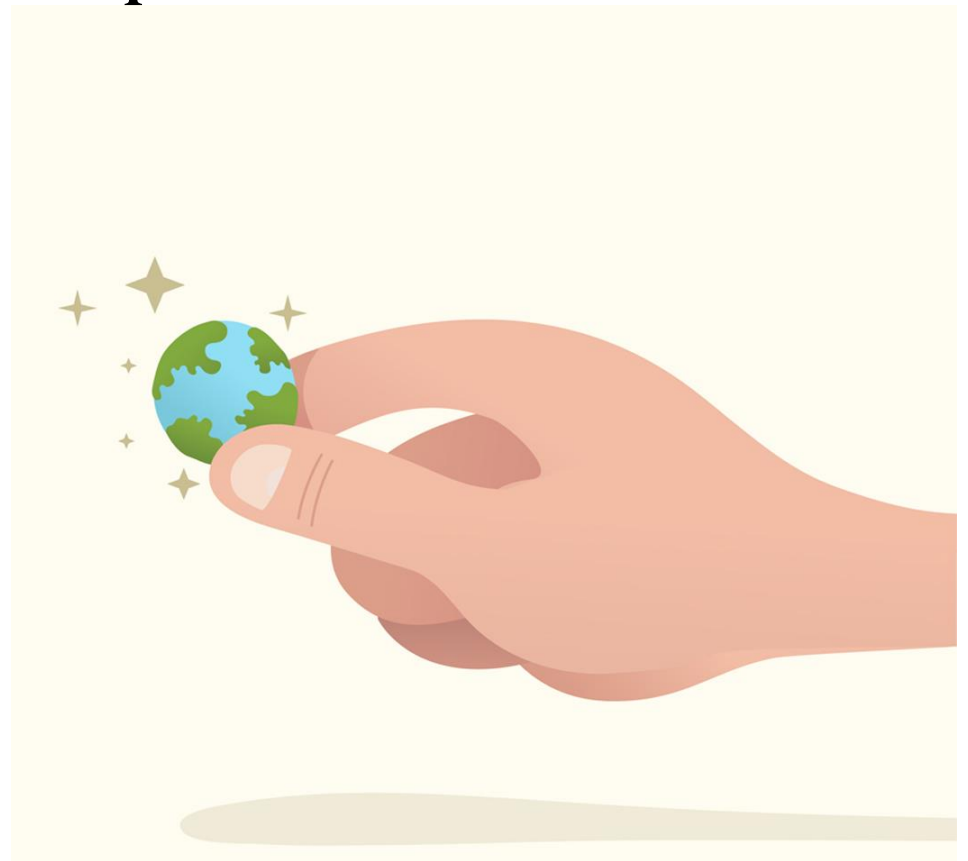


Parent/Orientation Programs

- **Bully Prevention Workshops for Parents**
- **Back to School Night**
- **Parent/Teacher Conferences**
- **New Student Orientation**
- **Incoming Kindergarten Parent Orientation**
- **Grade 5 Ambassadors Visit 4th Graders**
- **Middle School Principal, Assistant Principal and Counselor Visit**
- **Parent Workshops with Elementary Guidance Counselor**

Community Outreach

- **Newsletters** – provide information on current trends and topics for elementary school students.
- **Ongoing Professional Development**
- **Networking**
- **Building Website**
- **Grade 4 Carnival**
- **Fitness Day**
- **Family Picnic**
- **PARP**
- **Cultural Arts Program**



Timeline

Please note that guidance counseling groups and classroom lessons do not have a set timeline. They are incorporated throughout the course of the school-year and are subject to change based on the specific needs of the students.

September

- Code of Conduct
- Articulation Programs
- Back to School Night
- Sensitivity Programs

October

- Classroom Counseling
- Sensitivity and Bullying Programs

November

- Classroom Counseling Programs
- Data Collection Meetings

December

- Classroom Counseling
- Parent/Teacher Conferences

January

- Classroom Counseling
- Revisit Bullying Program

February

- Classroom Counseling
- Annual Review/504 Reviews
- Text Anxiety Program

March

- Classroom Counseling
- Annual/504 Reviews
- Parent/Teacher Conferences
- Test Anxiety Program

April

- Classroom Counseling
- Annual/504 Reviews
- NYS Testing

May

- Classroom Counseling
- Annual/504 Reviews
- Incoming Kindergarten Parents
- 4th Grade Visit to Mattlin

June

- Classroom Counseling
- Annual/504 Reviews
- Grade Four Moving Up